

THE MOST LUXURIOUS PENTHOUSE

BRICKELL FINANCIAL DISTRICT



KNOW YOU CAN BE PART OF THE MOST EXCLUSIVE ELITE GROUP OF PEOPLE:
ULTRA HIGH NET WORTH INDIVIDUALS

-INVESTOPEDIA-

OWNING LANDMARKS PROPERTIES IN THE WORLD

ECHO BRICKELL

THE TOP PH IN THE FINANCIAL DISTRICT

& ONE OF THE TOP 5 IN SOUTH FLORIDA

IT IS A ONE LIFETIME OPPORTUNITY

THIS INVESTMENT IS GOING TO CHANGE YOUR LIFE AND WILL BE

THE SMARTEST FIANCIAL DESICION



1. Pierre Hotel PENTHOUSE
\$125,000,000
 OWNED BY MARTIN ZWEIG
 \$20,417 Per Square Foot

New York's Pierre Penthouse Hits Sale Block With \$125 Million Price Tag

Ephebe: Since this article was initially published, the Pierre penthouse is finally listed for sale, asking \$125 million. The price tag is on hand with Elizabeth Lee Wright, Ronald Perera, and Lawrence Boardman of Realogy's International Realty. The real estate market will have another few weeks about the fate of a trophy penthouse atop New York City's Pierre Hotel. How it looks like some of these stories are about to be confirmed.

Owned by the estate of late Russian investor Martin Zweig, the trophy apartment is expected to officially hit the sale block before week's end, according to multiple sources. The anticipated asking price: \$125 million.



2. CitySpire PENTHOUSE
\$100,000,000
 OWNED BY STEVE KLAR
 \$12,500 Per Square Foot

Meet New York City's \$100 Million Penthouse For Sale

The slew of record-breaking trophy apartment sales in New York City has inspired yet another wildly expensive property to come to market: a Manhattan penthouse asking \$100 million.

The \$100 million penthouse sits atop the CitySpire building, overlooks Central Park, and offers a nine-figure view of the city.

\$4.5 million in 1993

Klar purchased the apartment as raw space for roughly \$4.5 million in 1993. He spent about the same amount renovating it, hiring celebrated interior designer Juan Pablo Molyneux to outfit the space in a "classical style."

TOP PENTHOUSES IN NEW YORK CITY



3. Bloomberg PENTHOUSE
\$115,000,000
 OWNED BY STEVE COHEN
 \$11,500 Per Square Foot

Hedge fund magnate lists Midtown East home for record \$115M, pays \$60M for East Hampton mansion

March 28, 2013 09:35AM

Hedge fund bigwig Steven Cohen has listed his duplex apartment in Midtown East's One Beacon Court for \$115 million and is buying an East Hampton oceanfront mansion for \$60 million, the New York Times reported. Cohen, who owns SAC Capital Advisors and is said to be worth almost \$10 billion, wants more than four times the amount than he paid for his 10,000-square-foot condominium at Bloomberg Tower — also known as One Beacon Court. He bought the pad, on the 51st and 52nd floors, for \$24 million in 2005.



4. Weill PENTHOUSE
\$88,000,000
 OWNED BY SANDY WEILL
 \$13,000 Per Square Foot

Billionaire's Daughter Pays Record Sum For NYC Pad

Former Citigroup chairman Sandy Weill listed his 6,744-sq-ft apartment at 15 Central Park West for an astonishing \$88 million in November, promising to donate the proceeds of the sale to charity.

Now comes news that Ekaterina Rybolovleva, the 22-year-old daughter of Russian billionaire Dmitry Rybolovlev, is buying the condominium. Rybolovleva is currently studying at an undisclosed U.S. university and plans to stay in the apartment when visiting New York. According to a source familiar with the sale, she paid the full asking price of \$88 million setting a record for highest individual transaction in New York City history.



5. Ritz-Carlton PENTHOUSE
\$70,000,000
 OWNED BY STEVE WYNN
 \$6,432 Per Square Foot

Wynn lands Ritz-Carlton penthouse for \$70M

May 15, 2012 08:35AM

Steve Wynn's long search for a luxury Manhattan apartment has finally come to a \$70 million conclusion. The New York Post reported that the casino mogul is purchasing the penthouse at the Ritz-Carlton being sold by Christopher Jeffries, the founding partner of the Millennium Partners development firm that renovated the 35-story building in 2002 to add condominiums.

The unit, listed with Brown Harris Stevens' senior vice president, has 10,882 total square feet on the 30th and 31st floor of 50 Central Park South. The top portion of the unit was once home to the St. Moritz hotel's grand ballroom, and has 15-foot ceilings, a 900-square-foot living room, a media room, a library, a display room, a 500-square-foot dining room, a kitchen and a breakfast room.

WEALTH REPORT

THE CITIES THAT MATTER TO HNWI'S - GLOBAL SURVEY



MOST IMPORTANT NOW

- 1 London
- 2 New York
- 3 Singapore
- 4 Hong Kong
- 5 Geneva
- 6 Shanghai
- 7 Dubai
- 8 Miami**
- 9 Paris
- 10 Beijing

HNWI – *High Net Worth Individuals US \$30 MIL +*

STARARCHITECTS

A NEW STANDARD OF ARCHITECTURE



Marina Lofts
Grove at
Grand Bay



The Surf Club



Jade Signature
Perez Art
Museum



Design 41
One Ocean
321 Ocean



Frost Museum
of Science



Echo Aventura
Sage Beach
Echo Brickell
*Muse
1100 Millecento



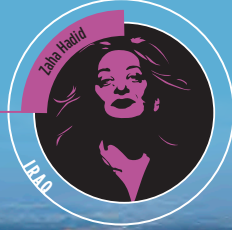
Faena Arts Center
Faena Bazaar
& Artists-in-
Residence
Faena Park
Miami Beach
Convention Center



1010 Brickell
Brickell House
Marea Beach
*Muse
Prive



ARQUITECTONICA
SLS Brickell
SkyRise Miami
Port Of Miami
Tunnel Gateways
Brickell Heights
One Brickell City
Center
Icon Bay
Hyde Midtown
Parasio Bay
Chateau Ocean
Bath Club Estates
Resorts World Miami



1000 Museum
Collins Park
Garage

STARARCHITECTS MAKE
THEIR MARK IN MIAMI

STAR ARCHITECTS LEAVE
A MARK ON MIAMI

ARCHITECTS
TRANSFORMING
SOUTH FLORIDA

ART BASEL -- AND REAL
ESTATE PROJECTS -- BRING
STAR ARCHITECTS TO MIAMI

TOP PENTHOUSES IN GREATER MIAMI

1. Aqualina PENTHOUSE
\$55,000,000

20,019 Square Feet in 2 Stories
\$2,747 Per Square Foot



2. Faena House PENTHOUSE
\$50,000,000

18,253 Square Feet in 2 Stories
\$2,740 Per Square Foot

Faena House's Penthouse Lists For A Bankers \$50 Million
By Tom Ichniowski

The penthouse at the Faena House, the residential portion of Alan Faena's architect-designed Faena District (previously under construction at the old Looney Hotel), has been listed for an **absolutely bankable \$50 million**, according to the Wall Street Journal. That price makes the unit competitive with the 'Palazzo D'Ona' penthouse at the Mansions At Aqualina, which is also on the market for \$55 million. The sale of either one at asking price would be the most expensive residential sale in Miami-Dade history, easily trumping the recent record \$34 million penthouse sale at the Edition for 'most expensive condo' and edging ahead of the current most expensive Miami-Dade residential sale ever, that \$47 million Indian Creek Island Road estate.



3. Apogee PENTHOUSE
\$25,000,000

11,000 Square Feet
\$2,273 Per Square Foot



4. Muse PENTHOUSE
\$16,000,000

5,995 Square Feet
\$2,669 Per Square Foot



5. CARLOS OTT PENTHOUSE
\$13,000,000



ECHO
BRICKELL



6,483 Square Feet
\$2,000 Per Square Foot

ECHO

BRICKELL



PROPERTY
MARKETS
GROUP



BRILLIANCE LOVES COMPANY

ECHO
BRICKELL



New York
Empire State Building

Architect
William Lamb



Dubai
Burj al Arab

Architect
Carlos Ott



London
The Gherkin

Architect
Foster + Partners



Architect
Carlos Ott



ON THE RISE FROM MIAMI TO NEW YORK



PMG STANDARD

- **Delivered Fully Finished**
 - Marble and/ or Wood Flooring
 - Advanced lighting
 - Custom Italian Cabinetry
 - SubZero/Wolf Appliances
 - Fully built out his and hers walk-in closets
 - Paint and finishings works
- **PMG Smart Home 2.0**
- **Conceptual Designer, Carlos Ott**
- **Robotic Parking**
- **Soaring Ceiling heights ranging from 9' - 14'**
- **Summer Kitchens**
- **Expansive Terraces ranging for 300 – 900 sq. ft.**
- **Tesla charging stations**



Interiors by world renown yoo STUDIO





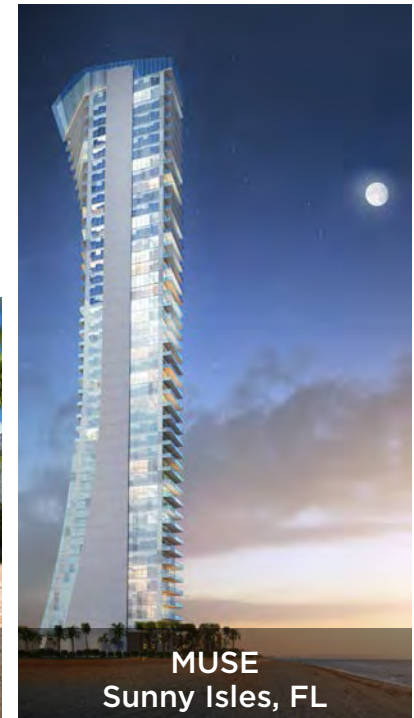
CARLOS OTT

Carlos Ott has forty years of outstanding experience in the design of construction projects. Recognized internationally as one of the leading design architects, Carlos Ott has been awarded numerous international prizes and awards of merit over his illustrious career.

Projects with Carlos Ott's architectural signature have recently been completed or are under construction in France, Germany, Canada, the United Arab Emirates, Saudi Arabia, China, Singapore, Malaysia, India, Sri Lanka, Mexico, Panama, Puerto Rico, Dominican Republic, Argentina, USA, Philippines and Uruguay.



CONCEPTUAL DESIGN
Carlos Ott





LUXURY BRANDS ALIGN

In our commitment to providing PMG residents the latest trends in luxury living, we have partnered with Tesla Motors, the creator of the revolutionary Model S sedan. This exclusive partnership sets a new standard of living, one that blends cutting edge technology with timeless design.

TESLA



HIGHLIGHTS

- Pre-construction
- Conceptual Design by Carlos Ott
- Interior design by yoo Studio
- Delivered fully finished
- Service Suites
- Standard with Marble flooring
- Custom PMG Smart Home technology
- Custom Italian cabinetry
- Side by side paneled Sub-Zero/Wolf appliances
- Panoramic views of Biscayne Bay, Downtown Miami and South Beach
- Exclusive Food and beverage service
- Four hot tubs with bathing deck overlooking the spectacular Brickell skyline

PENTHOUSE EXCLUSIVITY

HIGHLIGHTS

- Private elevator access with advanced biometric security features
- Grand master his and her walk-in closets
- Private maid's quarters with bathroom (upper penthouses only)
- Midnight Bar in Master Suite
- 8' Deep Terraces
- 14' Ceiling with floor-to-ceiling windows

Top Penthouse personalized floor plan by Carlos Ott to fit the exact specifications of homeowner.



CARLOS OTT PENTHOUSE

The Carlos Ott Penthouse at Echo Brickell truly is 1 of a kind - never before has an Echo residence been designed to fit the exact specifications desired by the residing homeowner. Perched atop the Echo Brickell tower (occupying the entire floor), the Carlos Ott Penthouse will offer stunning views of Biscayne Bay, the Atlantic Ocean, and Downtown Miami. Here, amongst spacious high ceilings, famed architect Carlos Ott will meet with the owner to design the ultimate "residence of dreams." Specification will include everything from the layout of the walls to the overall floorplan, the surface material selections, and even the very last fixtures and window treatments.

1 home above it all.

1 breathtaking top floor residence.
1 full floor.
1-on-1 personalized design creation
with famed architect Carlos Ott.
1 of a kind.
1 available.

*ARCHITECT OF RECORD - COHEN - FREEDMAN - ENCINOSA & ASSOCIATES
THE FEATURES, PLANS AND SPECIFICATIONS DESCRIBED ABOVE ARE PROPOSED ONLY, AND THE DEVELOPER RESERVES THE RIGHT TO MODIFY, REVISE OR WITHDRAW ANY OR ALL OF SAME IN ITS SOLE DISCRETION AND WITHOUT PRIOR NOTICE. WITHOUT LIMITING THE GENERALITY OF THE FOREGOING, DEVELOPER RESERVES THE RIGHT TO SUBSTITUTE ANY OF THE FOREGOING
WITH ITEMS OF SIMILAR OR BETTER VALUE, IN DEVELOPER'S OPINION.

WITHOUT LIMITING THE GENERALITY OF THE FOREGOING, DEVELOPER RESERVES THE RIGHT TO SUBSTITUTE ANY OF THE FOREGOING
WITH ITEMS OF SIMILAR OR BETTER VALUE, IN DEVELOPER'S OPINION.



PENTHOUSE
INTERIORS

ECHO
BRICKELL



PENTHOUSE
INTERIORS

ECHO
BRICKELL



PENTHOUSE
INTERIORS

ECHO
BRICKELL



PENTHOUSE
INTERIORS

ECHO
BRICKELL

PENTHOUSE

BREATHTAKING OCEAN & SKYLINE VIEWS

PERFECT FOR LONG TERM INVESTMENT



ECHO
BRICKELL



PENTHOUSE BALCONIES

ECHO
BRICKELL

DAY DREAM





ECHO BRICKELL
AMENITIES

ECHO
BRICKELL



ECHO BRICKELL
AMENITIES

ECHO
BRICKELL



YOUR PENTHOUSE

ABOVE IT ALL

ECHO

BRICKELL